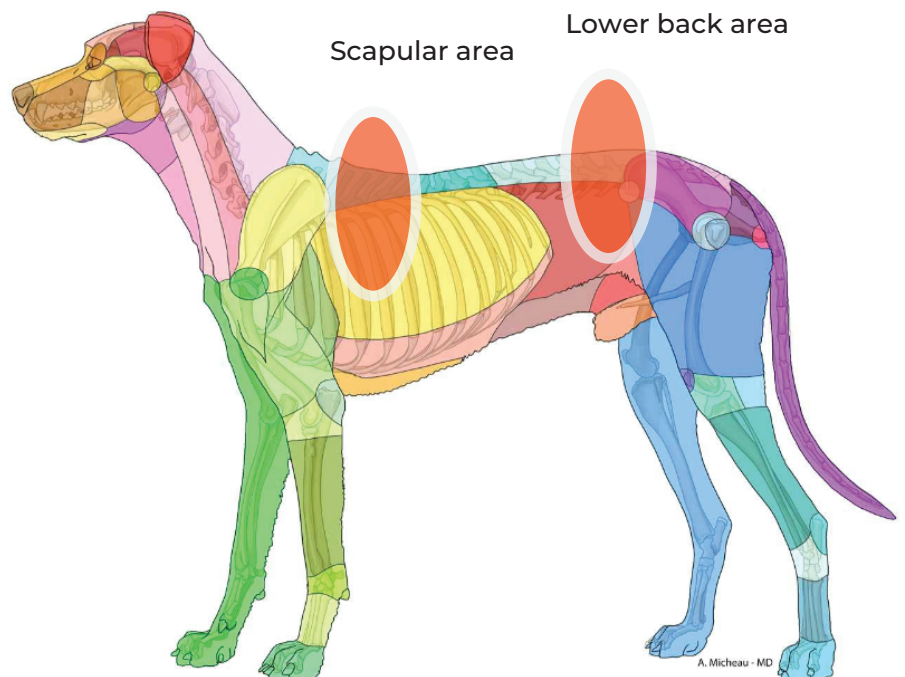
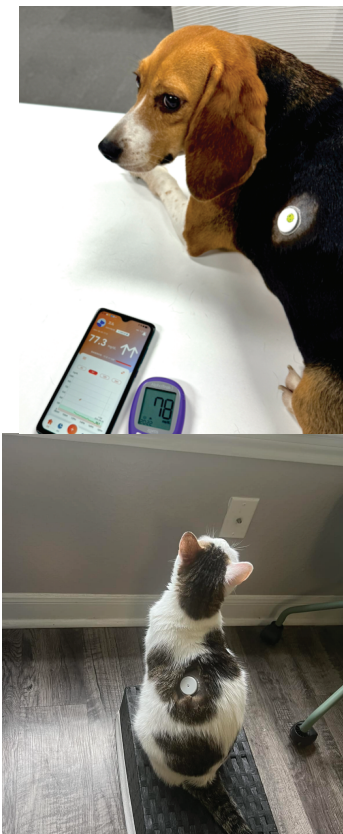


Sensor Application Area



- Select an area of skin that generally stays flat during normal daily activities (no bending or folding).
- Choose a site that is at least 1 inch away from an insulin injection site. Best location varies from pet to pet.
- You will find out with time which location is best. Also, it depends if you have a dog or a cat. Cats are more flexible, and less tolerant of anything extra sitting on their skin.
- Please find a location where it's less likely for them to reach and normally they will not lie on, specially if you have a large dog. Pressing on the sensor gives false lows ("compression low")
- Dogs can choose the scapular area or the lower back, while small dogs and cats are recommended to install on the lower back.



Keeping the sensor on



While our CGM is well tolerated by most pets, the duration of use cannot be guaranteed, because there is a possibility of pets biting or scratching the device off, so it is essential to use protective measures to keep the sensor on. Each pet has different body shapes, personalities, and activity levels. We can only provide suggestions, and the best reinforcement method needs to be adjusted by the pet owner according to their own pet.

Recommend Items

Tagaderm /overpatch



Clothes



Cohesive Bandage



E-Collar/Cone



Surgical Suit

